

# KRYTONITE™ SWELLING WATERSTOP



The Most Effective Waterproofing  
Protection for Construction Joints  
and Penetrations

## SIMPLE & EASY INSTALLATION



Krytonite Swelling Waterstop is easy to install and is ideal for a wide variety of construction joints and penetrations.



Krytonite™ Adhesive reliably bonds Krytonite Swelling Waterstop to horizontal and vertical concrete surfaces, even when the concrete is damp.

## OUTPERFORMS THE COMPETITION KRYTONITE SWELLING WATERSTOP



- Swells more than 10x its original size and up to 4x more than competitors
- Stops water, even against extreme hydrostatic pressure
- Offers excellent cohesive properties, and will not deteriorate over time
- Provides controlled swelling, which ensures proper concrete strength development
- Enhances visibility during inspections with a distinct yellow color
- Improves concrete consolidation and reduces voids with a unique trapezoid shape

## PROVEN WATERSTOPPING PERFORMANCE



Krytonite Swelling Waterstop proved to withstand hydrostatic pressure up to 265 ft (0.8 MPa) of head when tested using DIN 1048-5. Its swelling pressure seals construction joints and stops water.

## BENTONITE WATERSTOP

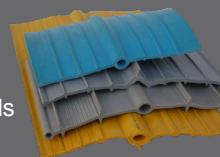
- Expands only 1-2x with clay material
- Swells uncontrollably, and disintegrates over time
- Fails to stop water under extreme hydrostatic pressure



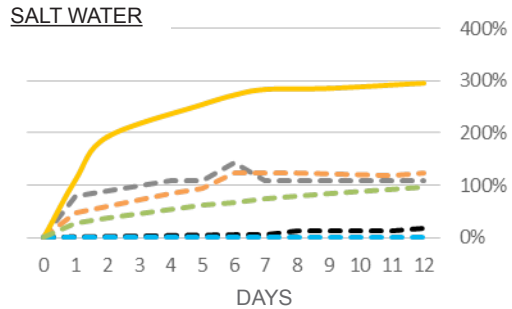
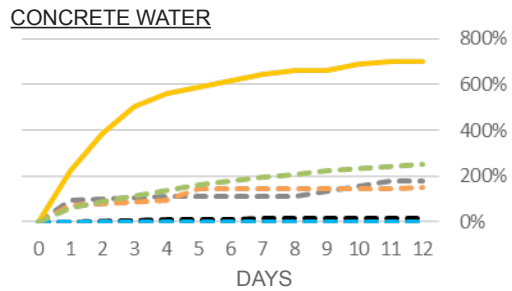
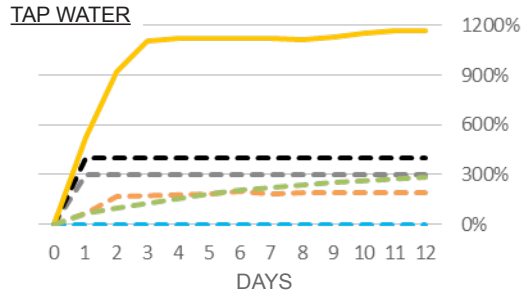
VS

## PVC WATERSTOP

- Does not swell
- Bends during concrete pours, creating voids
- Is difficult to install



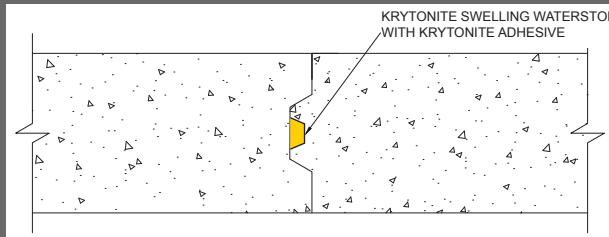
# SWELLING PERFORMANCE



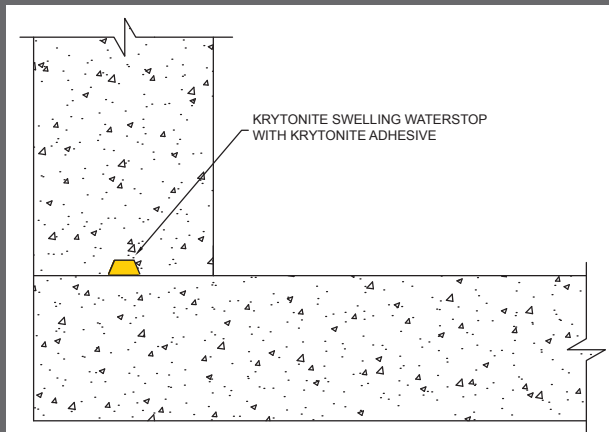
- Krytonite Swelling Waterstop
- - - Competitor 1 - Non-Bentonite
- - - Competitor 2 - Non-Bentonite
- - - Competitor 3 - Bentonite
- - - Competitor 4 - Bentonite
- - - Competitor 5 - PVC

**Krytonite Swelling Waterstop outperforms the competition.**

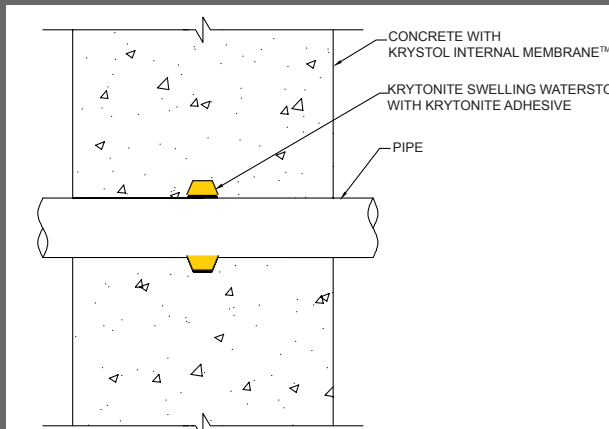
# WHERE KRYTONITE IS USED:



**SLAB-TO-SLAB OR WALL-TO-WALL CONSTRUCTION JOINTS**



**WALL-TO-SLAB OR WALL-TO-ELEVATED SLAB CONSTRUCTION JOINTS**



**PIPE PENETRATIONS**

Full CAD drawing instructions and applications available at: [www.kryton.com/technical-info/cad-drawing-details/](http://www.kryton.com/technical-info/cad-drawing-details/)



Kryton headquarters are in Vancouver, Canada. Our solutions are sold by over 50 distributors worldwide. To find the Kryton distributor nearest you, visit our website: [www.kryton.com](http://www.kryton.com)



SMART CONCRETE®

**Kryton International Inc.**

1645 East Kent Avenue North  
Vancouver, BC, Canada V5P 2S8

Tel: +1.604.324.8280

Toll-free (in Canada/USA):

1.800.267.8280

Email: [info@kryton.com](mailto:info@kryton.com)

[www.kryton.com](http://www.kryton.com)