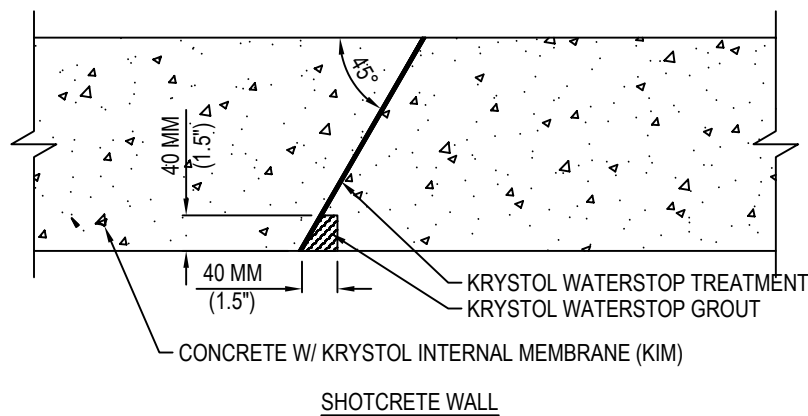
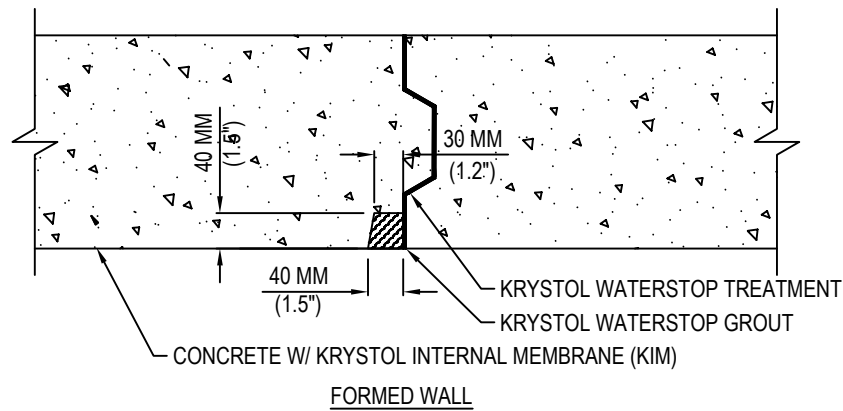




SMART CONCRETE®

KRYTON INTERNATIONAL INC.  
1645 EAST KENT AVE.  
VANCOUVER, BC V5P 2S8  
TOLL FREE: 1-800-267-8280  
PHONE: (604) 324-8280  
FAX: (604) 324-8899  
www.kryton.com



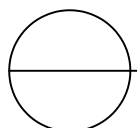
WALL TO WALL (VERTICAL) CONSTRUCTION JOINTS  
DOUBLE PROTECTION; EXTERNAL GROUT METHOD

**MANUFACTURER'S NOTES:**

1. PLACE CONCRETE TREATED WITH KRYSTOL INTERNAL MEMBRANE (KIM).
2. COAT SURFACE AREA OF THE JOINT WITH KRYSTOL WATERSTOP TREATMENT AT A SPREAD RATE OF 1 KG/M<sup>2</sup> (0.2 LB./SQ. FT.).
3. CREATE A 40 MM X 40 MM, TAPERING TO 30 MM, KEYWAY AT THE INTERSECTION WHERE THE TWO CONCRETE SECTIONS MEET WHILE THE CONCRETE IS IN A MOLDABLE PLASTIC STATE.
4. TIGHTLY PACK PREFORMED KEYWAY FLUSH TO THE SURFACE WITH KRYSTOL WATERSTOP GROUT AT A RATE OF 3.33 KG/M (2.23 LB./FT.).

**NOTES:**

1. INSTALLATION TO BE COMPLETED IN ACCORDANCE WITH MANUFACTURER'S SPECIFICATIONS.
2. DO NOT SCALE DRAWING.
3. THIS DRAWING IS INTENDED FOR USE BY ARCHITECTS, ENGINEERS, CONTRACTORS, CONSULTANTS AND DESIGN PROFESSIONALS FOR PLANNING PURPOSES ONLY. THIS DRAWING MAY NOT BE USED FOR CONSTRUCTION.
4. ALL INFORMATION CONTAINED HEREIN WAS CURRENT AT THE TIME OF DEVELOPMENT BUT MUST BE REVIEWED AND APPROVED BY THE PRODUCT MANUFACTURER TO BE CONSIDERED ACCURATE.
5. CONTRACTOR'S NOTE: FOR PRODUCT AND COMPANY INFORMATION VISIT [www.CADdetails.com/info](http://www.CADdetails.com/info) AND ENTER REFERENCE NUMBER 5104-018



**KRYSTOL WATERSTOP SYSTEM (KWS)**

WALL TO WALL – DOUBLE PROTECTION – EXT GROUT METHOD